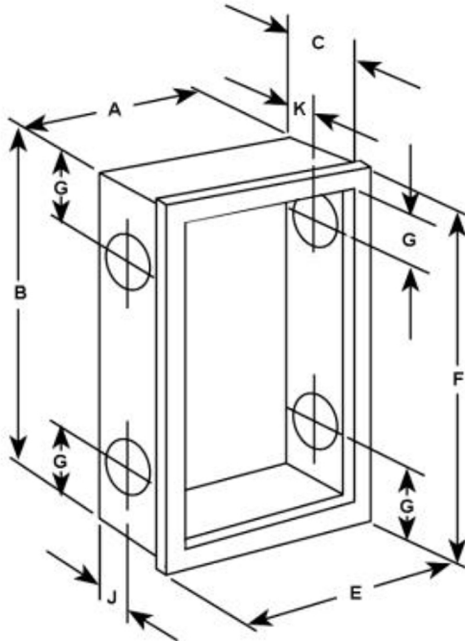
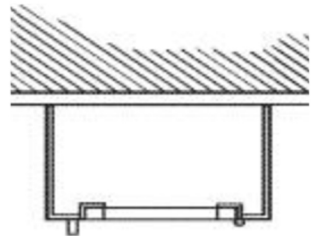


SURFACE MOUNT STAINLESS STEEL SUBMITTAL : DIMENSIONS

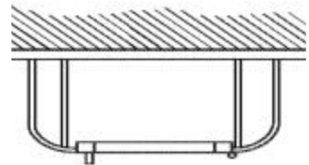
DOOR SERIES #	Tub I.D.			Frame O.D.		Wall Opening			Knockout Locations		
	Model	A	B	C	E	F	W	H	D	J	G
6039	27 3/16	33 3/16	6 1/2	27 3/8	33 3/8	--	--	--	Upon Request		
6139	27 3/16	33 3/16	8 1/2	27 3/8	33 3/8	--	--	--	Upon Request		
6239	27 3/16	37 15/16	6 1/2	27 3/8	38 1/8	--	--	--	Upon Request		
6439	27 3/16	37 15/16	8 1/2	27 3/8	38 1/8	--	--	--	Upon Request		
6639	27 3/16	41 15/16	8 1/2	27 3/8	42 1/8	--	--	--	Upon Request		
6339	33 3/16	33 3/16	8 1/2	33 3/8	33 3/8	--	--	--	Upon Request		
6539	35 15/16	37 15/16	8 1/2	36 1/8	38 1/8	--	--	--	Upon Request		
7239	35 15/16	41 15/16	8 1/2	36 1/8	42 1/8	--	--	--	Upon Request		



Top View



Square Trim



Optional Rolled Edge

Knockout provided on surface mounted cabinets by request